

Placement Cell Management System

Muniraju N¹, Amutha N²

¹Student, Department of Master of Computer Applications, Adhiyamaan College of Engineering (ACE), Hosur, Tamil Nadu, India.

²Assistant Professor, Department of Master of Computer Applications, Adhiyamaan College of Engineering (ACE), Hosur, Tamil Nadu, India.

Corresponding Author: muniraj7374@gmail.com

Abstract: - Placement Cell is an Online-based software application. The project is developing an application for the “PLACEMENT CELL MANAGEMENT SYSTEM” of the college. So that the university site can provide the important points of their students in a database so that the companies. The Admin can update the college information. The Placement Cell contains all information regarding students. This device store all the students’ Academic details and personal information. This system can be used as an application for the Placement Officers in the college to manage the student information with regard to placement. Student logging should be able to upload their personal and educational information in the form of a resume. The key feature of this project is that it is one time registration enabled. Our project provides the facility of maintaining the details of the students. It reduces the manual work and consumes less paper work to reduce the time. This project is developed with PHP for frontend and MY SQL for backend.

Key Words: —Website, Web application, Placement Cell Management System.

I. INTRODUCTION

The main objective of placement cell management system is to develop software which manages placement activities in college. This project contains the most important part i.e., displaying the personal and academic information of a student and company. The students and companies are also provided with the facility of editing some fields like username and password. The project also allows a data base Administrator to enter the information of a student and company which is then stored in the corresponding tables in the main database. Admin can also delete the student and company information after placement is over from the main database. The purpose of the project “PLACEMENT CELL MANAGEMENT SYSTEM”, the manual work makes the process slow and other problems such as inconsistency and ambiguity on operations. In order to avoid this placement cell managed system is proposed, where the student information in the college with regard to placement is managed efficiently.

It intends to help fast in fast access procedures in placement related activities and ensures to maintain the details of the student. Student’s logging should be able to upload their personal and educational information. The key feature of this project is that it is one time registration enabled. The placement cell calls the companies to select their students for jobs via the campus interview. The placement cell allows the companies to view the student resumes in selective manner. They can filter the student’s profile as per their requirement. The job details of the placed students will be provided by the administrator.

II. SYSTEM ANALYSIS

Students choose a specific college where the placement will be held, there is a need to maintain all these papers, causing large amount of space. It is manually done, chances of missing, difficult to handle the details of student.

2.1 Existing System

The existing system describes the features of the previous working model and their drawback. Existing system does all process manually. Placement officers register the information of students. If any modifications or updates are required in the profile of any student, it has to be done manually. This is tedious and time consuming, lack of security of data, took more man power, consumes large volume of paper and space. This process is so difficult when number of user’s increases.

Manuscript revised March 28, 2022; accepted March 29, 2022. Date of publication March 30, 2022.

This paper available online at www.ijprse.com

ISSN (Online): 2582-7898; SJIF: 5.59

2.2 Proposed System

The aim of the proposed system is to develop a system with improved facilities. The proposed system can overcome all the limitation of the existing system, such as student's information is maintained in the database, it gives more security to data, ensures data accuracy, reduces paper work and save time, only eligible students get chance, it makes information flow efficient and paves way for easy report generation, reduce the space. proposed system is cost effective.

2.3 Feasibility Study

The purpose of the feasibility study is not to solve the problem, but to determine the problem is worth solving. This helps to decide whether to proceed with the problem or not. It involves the analysis of the problem & collection of all relevant information relating to the product such as items that would be input to the system, processing required to carried those data, the output data required to be produced by the system as well the various constraints on the behavior of the system. "Web based placement cell management system" had undergone the feasibility study so that the proposed system is possible for development deployment in our college. The feasibility study concentrates on the following, such as Operational Feasibility, Technical Feasibility, Economic Feasibility.

Economic Feasibility:

The economic feasibility study evaluates the cost software development against the ultimate income or benefits get from the developed system. There must be scope for profit after the success completion of the project.

Technical Feasibility:

Technical feasibility study compares the level of technology available in the software development firm and the level of technology required for the development of the product. The level of technology consists of the programming language, the hardware resources, other software tools etc.

Operational Feasibility:

Operational feasibility study tests the operational scope of the software to be developed. The proposed software must have high operational feasibility. The usability will be high.

Scope:

Students can access previous information about placement. We can store information of all students. Various companies can access their information. Notifications are sent to students about the companies.

Modules:

- Admin
- Student
- Company

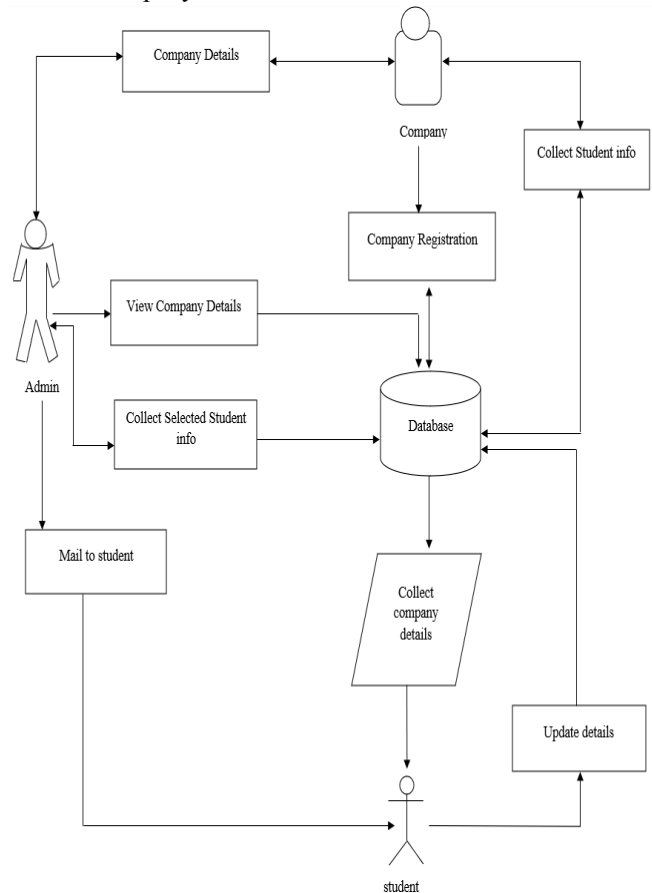


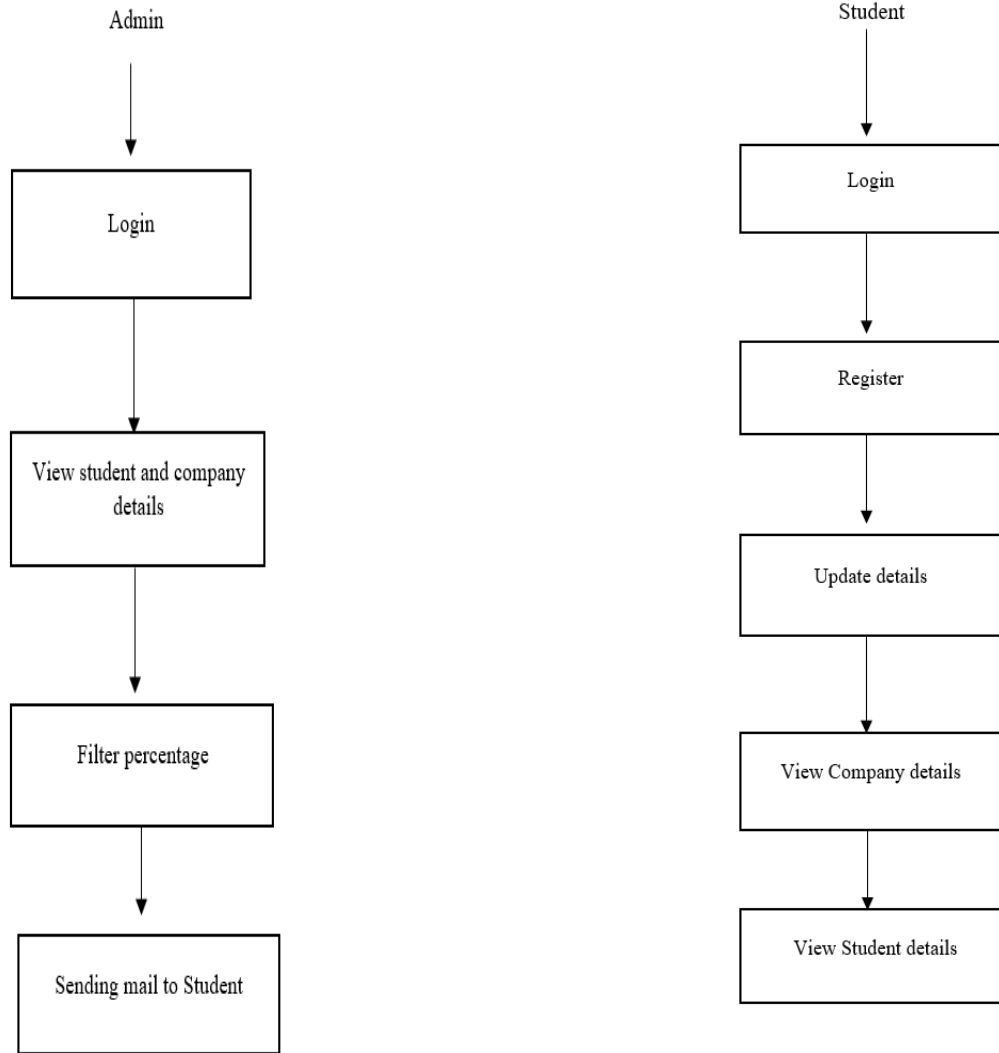
Fig.1. System Architecture

III. MODULE DESCRIPTION

3.1 Admin Module

The admin is the placement officer who views the students details and company details and post the selected students list. Sending email to student for complete list of information for particular campus. Login, View company details, view selected students' details, Sending mail.

- Login
- Add announcement
- View student details
- Filter students
- Delete student



3.2 Student Module

In this module, creation of student input records about academic career from SSLC, HSC and all semester with facilities to modify the records and viewing changed records. The student views the company details and verifies particular company details and provides valid details for registration.

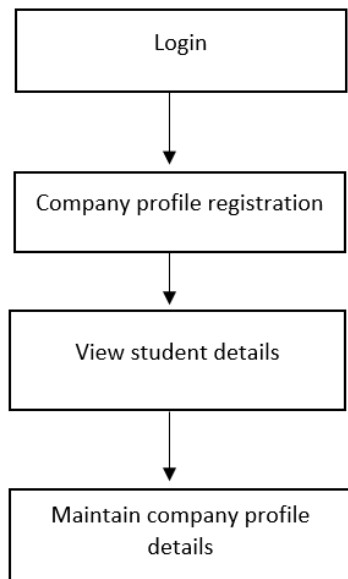
- Login
- Update Academic details
- Look for campus drives

3.3 Company

The company to communicate with Placement Officer, they register their profile and company needs to sign up. After approved by placement officer company can search the all the student's information. Company can mail to placement officer. Login Company, registration, students detail view.

- Login
- View student details
- Post new vacancy

Company



IV. CONCLUSION

The project is college Web based placement cell management system by maintaining the student details related to placement in an efficient manner. Operational feasibility study tests the operational scope of the software to be developed. The proposed software must have high operational feasibility. The usability will be high. Our project has a big scope to do. Students can access previous information about placement. We can store information of all students. Various companies can access their information. Notifications are sent to students about the companies. This project “Web based placement cell management system” is applicable for the companies and colleges.

REFERENCES

- [1]. DUKE, (2009). Personal response system. Center For Instructional Technology, Duke University. Retrieved March 6, 2009.
- [2]. Luke Welling and Laura Thomson (5th Edition) - “PHP and MySQL Web Development”.